

# Cedar Valley Woodworkers

Cedar Valley Woodworkers Association

Volume 10, Issue 7

July 2009

## End Grain End Grain

By Jeanine Begalske



Jeanine Begalske  
President

### Shop

As you may know Jim and I have several lathes. During tax season Acme Tools was having a demo, sale that Jim went to. He called me at work and asked me if I would like to have a Powermatic lathe, as he could get a good deal on one. Of course I said yes. The next problem was where to put it. About a year and a half ago we turned an addition on the 24'X40' shed which Jim had used for wood storage and garden shed which was 12'X40' into a paint room which took up 12'X25' of the addition. So he decided to take the garden area which was 12'X15' to make a lathe room.

This addition on the shed was just a pole shed out of tin with small window and it had two small garage doors on each end, no insulation or heat. So once again like the paint room we had to remove the tin to put in bigger windows and an outside door. We put in a double door in the paint room but only needed a single door for the lathe room. Sealing around the windows on a tin building was a problem. We ended up taking out



the new windows and adding house wrap to help seal up the windows. Since this was a pole shed 2X6's had to be added to the ceiling and walls so

we could put up the OSB board.

Planning a new shop area takes a lot of thought as to what you want in the shop and how it will all to work in that area. We had several tools that we wanted in this area, three of our four lathes( the Delta we had at the last meeting, Jim's mini lathe with the extension as he also has duplicators that will work on that lathe and of course the new Powermatic lathe), my Jet band saw with the extension on it to cut logs, the sharing center , a disc and belt sander, a drill press , a large tool chest we built a couple of years ago that has 20 drawers , and a small work bench. Jim made templates of the equipment so he could plan for the plug ins, you can never have too many. He also had to decide how to heat and cool this area. The paint room has a special radiant gas heater because of the fumes the lathe room did not need that. The local store where we get our LP also does plumbing and heating. They had a unit that looks like an air conditioner that did both heat and air that worked perfect for our needs. So with all of this in mind Jim could do the wiring. We also wanted a TV , lots of bright lights, ceiling fan and dust filter so plug ins had to be placed in the ceiling and upper walls as well. Once the wiring was done the OSB board for the ceiling and walls was installed. We had Art Mehmen over one Saturday to spray paint the room white. I was elected to roll out the paint as he sprayed and it worked the paint into the OSB board.

Now that the room was almost complete it was time to move the equipment in. How were we going to move this 800 lb Powermatic lathe that we had put into the paint room just a wall away from its new home? When we brought it home it was in pieces but still those pieces were

(cont'd on page 2)

Inside This Issue	
Presidents Article	1
The Oak Bulletin Board	2
Items for Sale	2
Minutes Treasurers report	3-4
Show and Tell	5
Editor's Page	6
Picnic Map	7
Mentors and Services	8
Sponsors	9
Officers and Committee Members	9

### For Sale

Used one horsepower Craftsman Dust Collector Model # 113.299780 for sale. It is in excellent operating condition. Asking **\$150.00**.

Call Sid Sidler 319-233-1298

This is an older Craftsman 12 inch bandsaw with original stand (wheels added) and two extra blades (new in the original boxes). The tires on the bandsaw wheels are in very good shape. If you are interested, call Pat@ 319-404-0644.



### The Oak Bulletin Board

The regular CVWA Meeting at the Waterloo Center for the Arts. 225 Commercial Street, Waterloo, IA. Tuesday July 14, 2009 @ 6:30.

The next Executive Board meeting will be Wednesday July 22, 2009, 7:00 PM at Hy-Vee Crossroads meeting room.

Scroll saw club meeting , July 9,6:00 PM at Art Mehman's shop.

Corridor Wood turners meeting July 9at the Acme Tool Store in Cedar Rapids.

Shop tour July 11, 2009 9AM to 12 PM [See page 4 for directions](#)

**Shop tour** July 18,2009 Rick Hutchenson in Grimes meet at Wood smith in Des Moines @ noon

CVWA Annual Shop Tours and Picnic August 9 [See page 6 for details and a Map](#)

*(Continued from page 1)*

very heavy. I don't know how Jim did it but he put it together by himself. Jim thought about how we were going to move this monster, he came up with the idea to use a trailer he had made for the garden tractor which tilts. So he hooked up the trailer on a tractor and backed it up to the paint room. We pushed the lathe to the door way, we had taken off the head and tail stock. The trailer bed was even with the floor of the paint room how lucky can you get. hen we just let the bed of the trailer tilt as we pushed it off of the trailer into the other door way into the lathe room. The tool chest is not a light thing either I carried each drawer one at a time into the lathe room as all of the draws are full.



Once the equipment was in place Jim wanted to add an air line and cabinets. I had several utility and base cabinets in the shop in Waterloo that we had stored in one of the sheds, but the moisture had done some damage to them so Jim had to rebuild them. The shop is almost complete just need to get dust collection installed. We have a wonderful room to do our turning in now. I know that we live so far away for you to come to our shop so this was a way for me to share our new lathe room with you. I am looking forward to see Daryl Sullivan's shop on the July 11<sup>th</sup> shop tour. Hope to see you there. **Jeanine**



**Minutes of CVWA June 9, 2009 Club Meeting:**

President Jeanine Begalske called the monthly meeting to order at 6:30 p.m. with 63 members and 4 guests attending. She welcomed everyone and reminded everyone to silence cell phones. With much on the agenda, Jeanine briefly mentioned these items : (1) newsletter is only available on the club website which is [www.cedarvalleywoodworkers.com](http://www.cedarvalleywoodworkers.com). (2) We need a Vice President and second Vice President. Anyone interested can talk to a board member for more info. (3) Shop Tour and Picnic is August 9th-please sign up for food count. (4) Saturday, July 11th at 9:00-12:00, we will have a shop tour at Daryl Sullivan's. Thanks to Dave Turner for setting this one up for us. Directions to this shop will be in the newsletter. (5) September is our 2X4 Contest. The categories are--Toys--Artistic--Functional--Turning--Miscellaneous--Carving. We would like some idea of the participation in this project. If you wouldn't mind letting us know by signing up, that would be great. (6) September 14th the Cattle Congress entries will be due and we need three judges. Sign up sheet is available if you are interested in placing an entry or judging. Any questions, talk to Reed Craft. (7) December 9th, will be our Annual Christmas Party. Mark the date. The room has already been reserved. (8) Our next executive meeting will be June 17th at Crossroads Hy-Vee at 7:00 p.m. in the meeting room upstairs. Anyone that would like to come is welcome. (9) Bob Glawe is looking for some of you to make the CVWA Pictorial Directory complete. If you think your picture is not in the directory, please see Bob. (10) Don Bushaw has some 1" pine to give away. (11) Kevin Bierman has a 1442 Jet Lathe for sale.

Next month, Rick Hutchenson from Grimes IA will be demonstrating scroll sawing. We will be having a special shop tour at his place, July 18, 2009 at 1:00 p.m. His website is [www.scrollsaw.com](http://www.scrollsaw.com) if anyone would like to preview some of his 200 scrollsaws.

We want to thank Bob Colby, Harold Morrow, Dave Mixdorf and Don Collum for the wonderful treats that were brought and the great coffee made by Don Gurney. Thanks guys!! (Thanks to Bob Anderson for organizing all this!)

**Show & Tell:**

Duane Huisman- Heirloom Baby Cradle ( has to make two more as triplets are coming soon-Congrats!)  
 Marvin Widdel- Mantle Clock  
 Bob Hewlitt- Turned Vase  
 Don Anderson- Stemmed Goblet / Off center turning bowl  
 Jack Rolison ( special guest)- beautiful turned items

**Tool Raffle:**

Rex Pershing won the raffle and chose the Woodsmith Cabinet Scraper system. The lucky winner of the tape measure was John Mohlis.

**Special raffle:**

Our demonstrator, Jack Rolison, donated a hat turned by none other. It was proudly won by Bob Lee. Thanks to Jack for the kind gesture.

Our demonstration for the evening was "Hat Turning". Jack Rolison is from Ottumwa, Iowa. He did a wonderful presentation. Thanks Jack.

**Respectfully Submitted- Wanda Bailey secretary**

**CVWA-Executive Meeting June17, 2009**

The executive meeting for Cedar Valley Woodworkers Association was held at Crossroads Hy-Vee meeting room on June 17, 2009 starting at 7:00 p.m. Attending that meeting were: Paul Bailey, Dave Turner, Jim Wikle, Pat Vollbrecht, Bob Anderson, Reed Craft, Jeanine Begalske, Wanda Bailey, Dennis Gilroy and Gene Knief. The Treasurer's report was given by Paul Bailey. Income for the month was \$145.16 and expenses were \$220.20 leaving a balance of \$1936.57. The report was accepted and filed.

President Jeanine mentioned that next month the executive meeting will be July 21st due to conflict of schedule. Everyone was in agreement.

July 18th will be the shop tour in Grimes, IA with Rick Hutchenson. We will meet at Woodsmith at

*(Continued on page 4)*



(Continued from page 3)

approximately 12:00 noon (?) to go together to Rick's. There will be a sign up sheet at the meeting to see who will be attending. The tour starts at 1:00 p.m.

Dave Turner will arrange a mass e-mail and Paul Bailey will send out notices of the upcoming shop tour at Daryl Sullivan's on July 11th.

There was discussion on the August Picnic and Tour. As usual, there will be **no** club meeting in August! Maps of tours will be available at the July meeting. The park for the picnic has already been reserved for us. It was agreed upon to sell raffle tickets at the meeting. Dennis Gilroy will purchase the meat at the Gilbertville locker for the picnic.

The 2X4 Contest was discussed. A July sign up sheet will be at the meeting to catch anyone who forgot to sign up. Prize ribbons will be awarded. Voting on the projects will follow the same procedure as our Christmas Party- everyone votes. Jeanine will get the needed ballots.

Gene Knief and Reed Craft will speak at the July meeting for ideas for Salvation Army Toy Giveaway.

Wanda Bailey suggested that we have a few newsletters available at the meetings for new members, guests and to others that might not have received theirs in the mail.

Question was brought up about the Swap Meet this year. Jeanine will speak to Bill Neal and get back to the group.

Pat Vollbrecht reminded the committee that it was time to pay Keith Bailey for the club website.

Cattle Congress needs judges for the event in September. Gene Knief will if he doesn't have an entry. President Jeanine mentioned that Glenn Johnson has some possibilities if needed.

Much discussion was held on the offices of Vice President and 2nd Vice President. With elections being held in November, many members names were tossed around.

Newsletter deadline will be June 27, 2009.

**Respectfully Submitted, Wanda Bailey - Secretary**

**Cedar Valley Woodworkers**

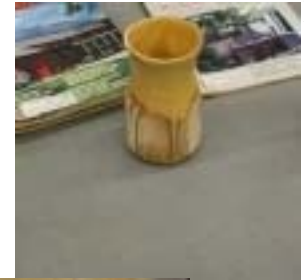
**Treasurers Report April 22, 2009**

Beginning Balance		2011.62
Income: Dues	50.00	
Raffle	95.00	
Dividend	16	
Subtotal		145.16
Expenses		
-#2357 Jim Wikle Ink Postage	10.50	
#2358 Betty Vollbrecht Tools	84.70	
# 2359 Jack Rolison Speaker	125.00	
Subtotal		220.20
Ending Balance		1936.57

**D R I V I N G      D I R E C T I O N S**

- > -----
- A) 225 Commercial St, Waterloo, IA >
1. Start out going NORTHWEST on COMMERCIAL ST toward W 1ST ST/US-63 N. (go 0.1 miles)
  - > 2. Turn LEFT onto US-63 S/W MULLAN AVE. Continue to follow US-63 S. (go 0.5 miles)
  - > 3. Stay STRAIGHT to go onto ramp. (go 0.3 miles)
  - > 4. Merge onto US-218 N. (go 5.0 miles)
  - > 5. Merge onto US-218 N/IA-27 N toward WAVERLY. (go 5.6 miles)
  - > 6. Turn LEFT onto CR-C57/W CEDAR WAPSI RD/W CEDAR-WAPSI RD. (go 5.1 miles)
  - > 7. Turn LEFT onto W CEDAR WAPSI RD/W CEDAR-WAPSI RD. (go 0.6 miles)
  - > 8. W CEDAR WAPSI RD/W CEDAR-WAPSI RD becomes N BUTLER RD. (go 0.3 miles)
  - > 9. End at 30217 Butler Ave Cedar Falls, IA 50613-9310

# Show and Tell



**Upper Left:** Duane Huisman's Heirloom Baby Cradle  
**Center:** Marvin Widdle's Mantle Clock  
**Upper Right:** Turned vase by Bob Hewlitt  
**Near Left:** Presenter Jack Rolison's Turning other than Turned Hats.  
**Near Right:** Don Anderson's Stemmed Goblet and Off center turning bowl



Jack Rolison Starting to turn a hat **Upper Left** The blank before any work is done  
**Center Above** Starting the turning process  
**Above Left:** The outside is starting to take shape  
**Center Left:** The inside is now starting to take shape  
**Center Below:** Finished hat set aside for drying

### Editors Notes

There is so much to talk about I don't know where to begin;

The shop tour on July 11 runs from 9AM until noon at Daryl Sullivan’s shop driving directions from the Art Center are on page four and below

**D R I V I N G                      D I R E C T I O N S**  
> -----

A) 225 Commercial St, Waterloo, IA >

- 1.Start out going NORTHWEST on COMMERCIAL ST            toward W 1ST ST/US-63 N.    (go 0.1 miles)
- > 2. Turn LEFT onto US-63 S/W MULLAN AVE. Continue to    follow US-63 S. (go 0.5 miles)
- > 3. Stay STRAIGHT to go onto ramp. (go 0.3 miles)
- > 4. Merge onto US-218 N. (go 5.0 miles)
- > 5. Merge onto US-218 N/IA-27 N toward WAVERLY.            (go 5.6 miles)
- > 6. Turn LEFT onto CR-C57/W CEDAR WAPSI RD/W CEDAR-WAPSI RD. (go 5.1 miles)
- > 7. Turn LEFT onto W CEDAR WAPSI RD/W CEDAR- WAPSI RD. (go 0.6 miles)
- > 8. W CEDAR WAPSI RD/W CEDAR-WAPSI RD becomes        N BUTLER RD. (go 0.3 miles)
- > 9. End at 30217 Butler Ave Cedar Falls, IA 50613-9310

Next there is the shop tour on July 18 going at Rick Hutchenson’s shop in Grimes we will meet at Woodsmith in Des Moines around noon, maps for this trip will be available at the July meeting

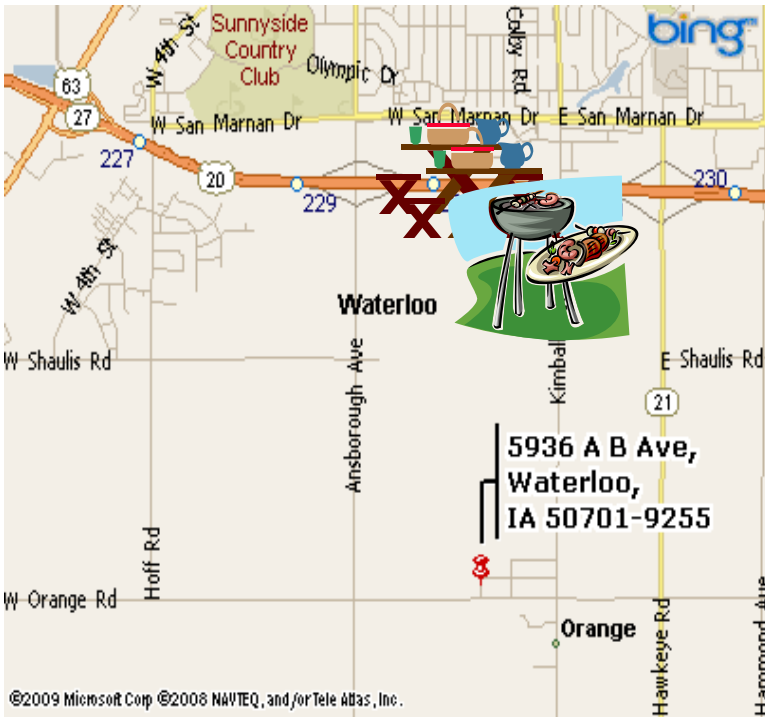
Remember to sign up for the Shop Tours and the picnic on August 9

Septembers meeting will be the judging of the projects submitted for the 2 x 4 contest Remember it is not to late to enter.

**Toys            Toys            Toys**

**It is hard to believe but Christmas is coming and the Salvation Army will need donations of toys. They really do appreciate our hand made toys. So please build something.**

jw



Picnic is at  
Charm Park

Dunkerton  
approx. 4:30



What to bring to potluck picnic:

- Lawn chairs
- Hot or cold dish
- Table service
- Your favorite drink

Beef burgers, buns and condiments will be provided.



Please car pool if possible.

## 8th Annual Shop Tours and Picnic August 9, 2009

### Meeting place and first shop tour at 1:30

Carl Leavell Maps will be handed out at Carl's shop

5936 A B Ave Waterloo



### Second shop tour, 2:15

Chip Schmidt

2024 Hilton Dr

Cedar Falls



### Third shop tour, 3:15

Bob Jefferson

9517 E Dunkerton Rd

Dunkerton

### Fourth shop tour, 4:00

Tom Duffy

826 Sal Ave

Dunkerton

List of Mentors for Club Members. I believe the mentor's time is free, but the person being mentored is expected to cover any material costs.

Canoe/Kayak construction, Chip Schmidt, 277-8504, cschmidt@cfu.net

Detailed Toys, Bob Anderson, 232-9813, wtoys@yahoo.com

Jack of all trades (enjoys a Challenge), Hank Morris, 235-0692, hankannam@aol.com

Has the Ability to figure MOST problems out—Dick Buchanan, 277-2477, rbuchanan@cfu.net

Intarsia, Pat Vollbrecht, 232-1923, patV35@mchsi.com

Fretwork, Garylee Thurm, 279-3219, flytying4u@hotmail.com

Cabinet making, Tom Bussey, 641-435-4354, tebussey@gmail.com

Wood carving, Sid Sidler, 233-1396, sidsstudio@aol.com

Furniture and cabinet building, Jerry Krug, 475-2391, jkrug@netins.net

### Classes and Services for Pay by Fellow Club Members

*Sharpening services by Glenn Johnson, 641-435-2511*

*Sharpening Services by Carl Leavell, 319-233-4491*

#### **NEW PATTERN TEMPLATE LIBRARY**

Your executive board has developed a new loaner program that might be of interest to each of you. Though the contribution of several different individuals the following full size templates are available for check-out by club members:

Nativity set:

Rocking horse:

Two different doll cradles

Should any of you have a pattern template set that your willing to share, call a board member!



Please remember to patronize our Sponsors!

\*\* Member ID required for discounts



**Woodsmith  
Store\*\***

10320 Hickman  
Road

Clive, IA 50235

515-254-9494 or

1-800-835-5084



\*\*501 West 1st

Avenue

Durant, Iowa 52747-  
9729



**10% Club Discount**

[www.hartvilletool.com](http://www.hartvilletool.com)

**Contact Rick Ruport for  
details**

**Glenn's Sharpening  
32446 Floyd Line St, Nashua  
641-435-2511**

**Acme Tools  
1943 Blairs Ferry Rd.  
Cedar Rapids**

**Sherwin Willams  
5212 University Ave,  
Cedar Falls**

### Officers and Committee Members

#### Elected Committee Members

President Jeanine Begalske

*1st Vice President* Reed Craft

*2nd Vice President*

*Secretary* Wanda Bailey

*Treasurer* Paul Bailey

#### Appointed Committee Members

*Committee Member* Rick Rupert

*Committee Member* Gene Knief

#### Appointed Committee Members

*Committee Member* Dave Turner

*Committee Member* Robert Hewlitt

*Committee Member* Dennis Gilroy

*Club photographer* John Mason/Bob Glawe

*Refreshment Chairman* Bob Anderson

*Newsletter* Jim Wikle